

Coantec C50 series Coantec Ultra HD Mega Pixel Industrial Videoscope

- High-definition Industrial Camera
- High-definition Display
- Rear-mounted Fiber Light System
- Motor-driving Joystick



- New Multi-function Joystick
- Powerful Software Function
- HDMI High-definition Video Output
- Integrated Machine Design

Explosion-proof Marks:

Ex ic IIB T4 Gc

Explosion-proof Certificate Number:

SYEx18.08155

SHENZHEN COANTEC AUTOMATION TECHNOLOGY CO.,LTD.

No.3, Crosslane 3, Yuanhu Road, Zhangbei,Ailian,Longgang District, Shenzhen, China,518172

Tel : +86 -755- 8972 8626 Fax : +86 -755- 8978 6196

E-mail : zyd@chinavideoscope.com Web : www.chinavideoscope.com



YouTube



Facebook

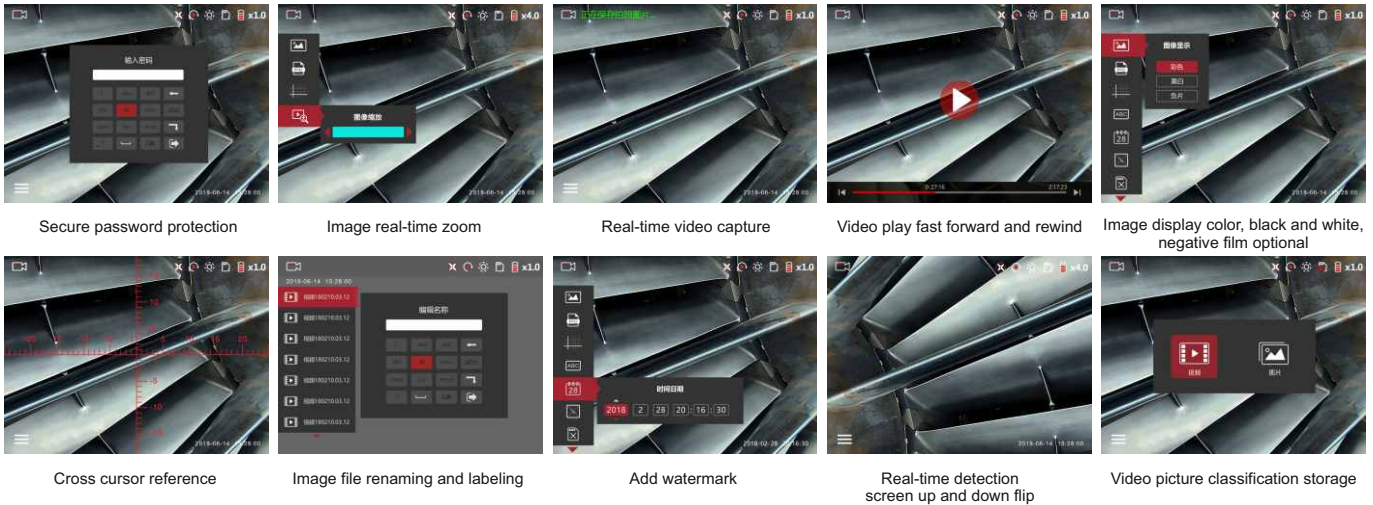


Coantec Website

✓ Excellent Performance

Software Features

The new human-computer interaction interface, powerful software functions, and user-friendly and concise design make the inspection work more efficient.



Hardware Features



- **HD Image**

HD display, miniature HD industrial camera, clear image, excellent image quality, effectively restore the true colors and better present internal details.

- **Super Light**

The rear-mounted optical fiber light guide lighting system, the maximum illuminance can reach to 100,000 Lx, the brightness can be adjusted according to the detection environment to obtain better observation results.

- **Video Output**

HDMI high-definition video output interface, connect the device with an external large screen, suitable for expert or multi-person consultation.

- **Long-lasting Life Battery**

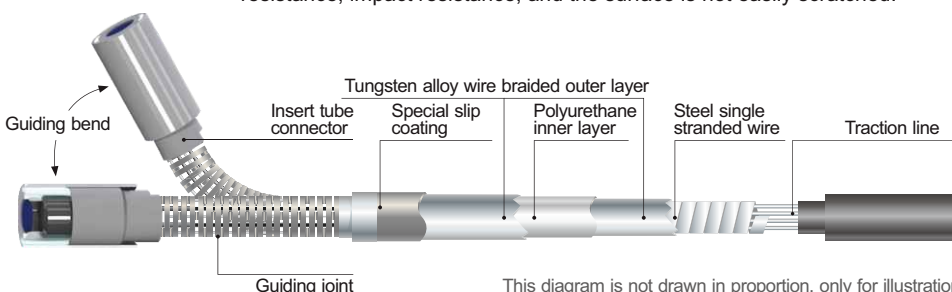
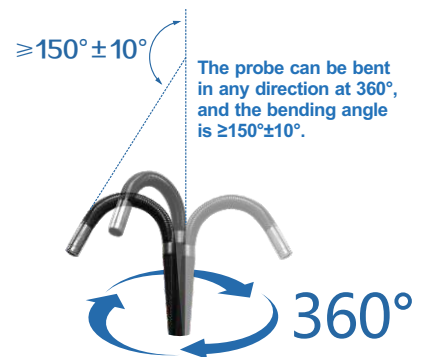
The battery can work continuously for about 4 hours, and it is equipped with a set of backup batteries to support long-term inspection work.

- **Explosion-proof Certification**

Certification of the Quality Supervision and Inspection Center for Low-Voltage Explosion-proof Electrical Products in the Machinery Industry, Explosion-proof Mark Ex ic IIB T4 Gc.

✓ Excellent Quality

- Double tungsten alloy braided insert tube of 4 layers
- IP67 protection level, waterproof and dustproof
- Stable and reliable laser welding process
- The camera adopts sapphire lens, which has high hardness, strong abrasion resistance, impact resistance, and the surface is not easily scratched.



This diagram is not drawn in proportion, only for illustration.

The probe part adopts a laser welding process with more than 100 points, and each point is accurately welded in place in strict accordance with the standard, ensuring the reliability of the welding spot welding and the strength of the welding, and effectively guaranteeing the stability and reliability of the probe processing and the overall product.

✓ Easy Operation

Intelligent Navigation Menu

- The navigation menu design is simple and clear, easy to understand and easy to use, novices can get started without training.
- Support ten languages: Simplified Chinese, Traditional Chinese, English, Japanese, Korean, German, French, Portuguese, Spanish, Russian.
- 0.1 second automatic exposure, automatic noise reduction, fast capture of the real details of the detected object, and feedback through high-definition pictures.



Photo / video button
Ergonomic design-easy operation



Compact design, superior product performance, and easy-to-use operation with one hand, giving you an unprecedented ease of use.

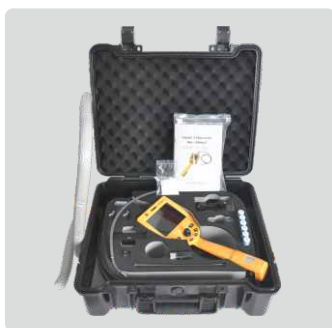


Multi-function Electric Joystick



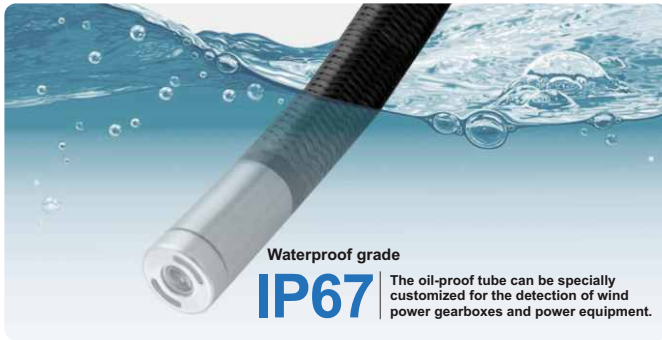
- The unique rocker closed-loop control technology enhances the bending sensitivity and steering control of the probe for more precise operation.
- The electric joystick can control the probe to be guided in 360° all-way, with a strong sense of control, flexible steering and precise angle, and it has one-key lock, step-by-step fine adjustment, fast and slow adjustment, automatic reset, OK confirmation, menu navigation function, making inspection work easier.

✓ Lightweight and Portable



- One hand-held design, the whole machine (with battery) weighs only 1.35kgs, optional leather shoulder bag, safe and portable, Whether it's checking the fan gearbox on a 100-meter tower or a complex large machine, the C50 Industrial Videoscope is designed to make it easier to use.
- The instrument case adopts industrial grade anti-drop design, which is more compact and sturdy. It can be easily placed in the luggage racks such as airplanes, high-speed rails and trains during business trips.

✓ Strong Environmental Adaptability



Waterproof grade
IP67

The oil-proof tube can be specially customized for the detection of wind power gearboxes and power equipment.

Technical Specification

Host	
Display Dimension	5-inch HD display
Digital Zoom	Support real-time 4x zoom ,8x partial zoom when playback
LED Brightness Level	0-7 level adjustment
Auxiliary Measurement Function	Cross cursor guide
Photo/Video	With photo and video functions, can be captured during recording
Video Play	Video playback can fast forward and rewind
Document Format	Image :JPEG/BMP; Video:MP4
Image Rotation	0°/90°/180°/270°
Image Preview	List preview mode,full-screen viewing optional/delete/time watermarking/file rename/add note etc.
Output Port	HDMI
Storage Medium	Standard 8G capacity SD card, maximum support 32G
Menu Language	Simplified Chinese、 Traditional Chinese、 English、 Japanese、 Korean、 French、 German、 Portuguese、Spanish、 Russian、 Italian、 Dutch etc.
Protective Device	Buffer protection device for connecting host and wear-resistant tube
Emergency Lighting	Glare LED emergency lighting
System Security	Protect power-on password lock function
Host Dimension	380mm*135mm*85mm
Package Dimension	600mm*395mm*235mm
Host Weight	1.45kg(standard 6020 tube)
Tube	
Probe Diameter (±0.1mm)	Φ3.9 Φ4.8 Φ6 Φ8
Tube Length	1-3m 1-3m 1-5m 1-10m
Tube Material	Tungsten alloy wire wear-resistant braided tube
Camera Pixels	1,000,000

Distributor

If the technical parameters are changed, please refer to the actual products, there will be no prior notice. All products are trademarks or registered trademarks of the owner of products.

5

Rear-mounted LED light source warranty, more intimate service

Provide lifetime warranty service for rear-mounted LED light source to solve customers' worries.



Application Field

It can be widely used in aerospace, special inspection industry, energy and power, automotive aftermarket, automobile manufacturing, shipbuilding, rail transit, petrochemical industry, food and drug machinery, mold casting, mechanical processing, construction engineering, police safety, military equipment, testing of municipal pipelines, university research institutes and many other fields.

Tube				
View Direction	Forward	Forward/Side	Forward/Side	Forward/Side
Depth of Field	5-100mm	8-80mm (Standard) /7-150mm (Optional)		
Field of View	120°	110°/70°	110°/70°	110°/70°
Lighting Mode	Rear-mounted LED, optical fiber	Rear-mounted LED, optical fiber	Rear-mounted LED, optical fiber	Rear-mounted LED, optical fiber
Joystick Control	360° all-way articulation			
Probe Unidirectional Bending Angle	≥150°±10°			
Bending Lock	One-key lock			
Step Regulation	Step regulation between high-speed and low-speed bend			
Bending Control Mode	Electric control			
Probe Waterproof Level	IP67			

Power	
Power Supply	Rechargeable lithium battery (with battery reverse protection)
Battery	3.7V,3200mAh
System Operating Time	≥4H

Operation Environment	
Machine Operating Temperature	-10°C-50°C
Probe Operating Temperature	-20°C-60°C
Storage Temperature	-20°C-60°C
Relative Humidity	15%-90%

Configurations	
Standard Configurations	C50 videoscope x1, instrument case x1, lithium battery x2, sets, charger x1, card reader x1, 8G SD card x1, user manual x1, precautions for use x1
Optional Configurations	Micro HDMI cable, Hand-held casing, High-grade instrument case (with insert tube storage tray), Pipe Centralizer